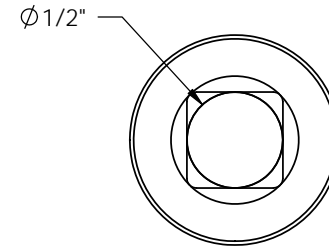
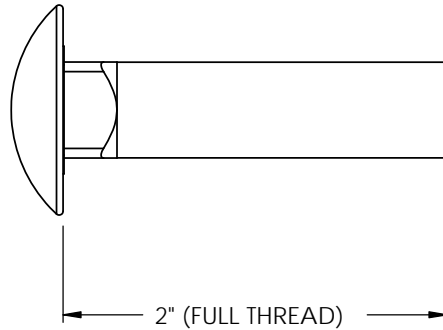
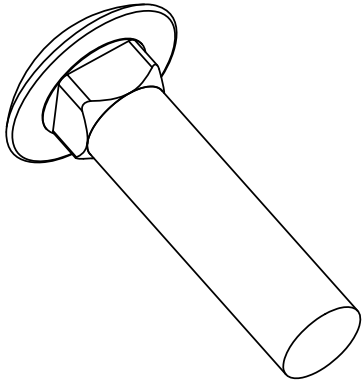


30060
PART NUMBER

C
REVISION

DUPLICATION, DISTRIBUTION OR ALTERATION OF THIS DOCUMENT BY ANY MEANS, IN WHOLE OR IN PART, IS STRICTLY FORBIDDEN. ALL INFORMATION HEREIN DISCLOSED, WHETHER PATENTABLE OR OTHERWISE, IS THE CONFIDENTIAL, PROPRIETARY AND INTELLECTUAL PROPERTY OF ALUMA-FORM, INC. ANY USE OR PUBLICATION OF THIS DOCUMENT OR CONTAINED INFORMATION, WITHOUT FIRST OBTAINING EXPLICIT WRITTEN AUTHORIZATION FROM ALUMA-FORM, INC., IS ABSOLUTELY FORBIDDEN.

ALUMA-FORM, Inc.
3625 OLD GETWELL ROAD,
MEMPHIS, TN 38118-6072 U.S.A.
TEL (901) 362-0100 FAX (901) 375-3383



- NOTES:
 1) MUST CONFORM TO ALUMA-FORM SPECIFICATION #90004
 2) GALVANIZED COATING MUST CONFORM TO ALUMA-FORM SPECIFICATION #90002.

1/2"-13 UNRC x 2" (FULL THREAD) ROUND HEAD SQUARE NECK BOLT

CHANGE / REVISION DESCRIPTION		E. A. NO.	CHANGE DATE	RELEASE E. A. -	PROJECT CODE -	14-DEC-69 RELEASE DATE	1:1 SCALE	0.156# WEIGHT	DESCRIPTION	BOLT, CAR. HEAD, 1/2" X 2" (FULL THREAD)		
									MATERIAL	GALV. STEEL (SEE NOTES)		
									SECTION #			
REDRAWN W/SOLID WORKS		3143	15-NOV-01						DRH			
				DRAWN BY	REVIEWED	APPROVED			30060 PART NUMBER	C REVISION		